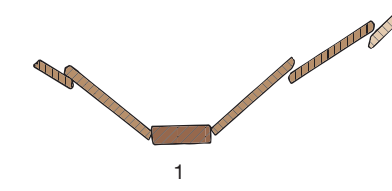
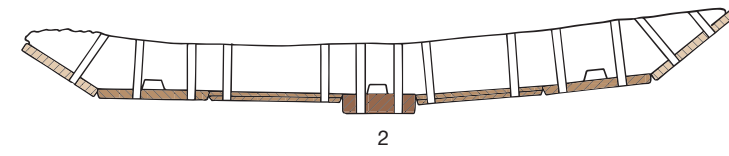
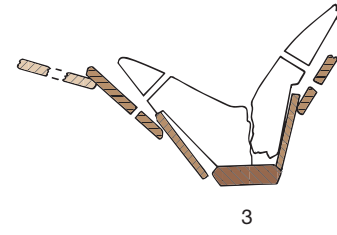
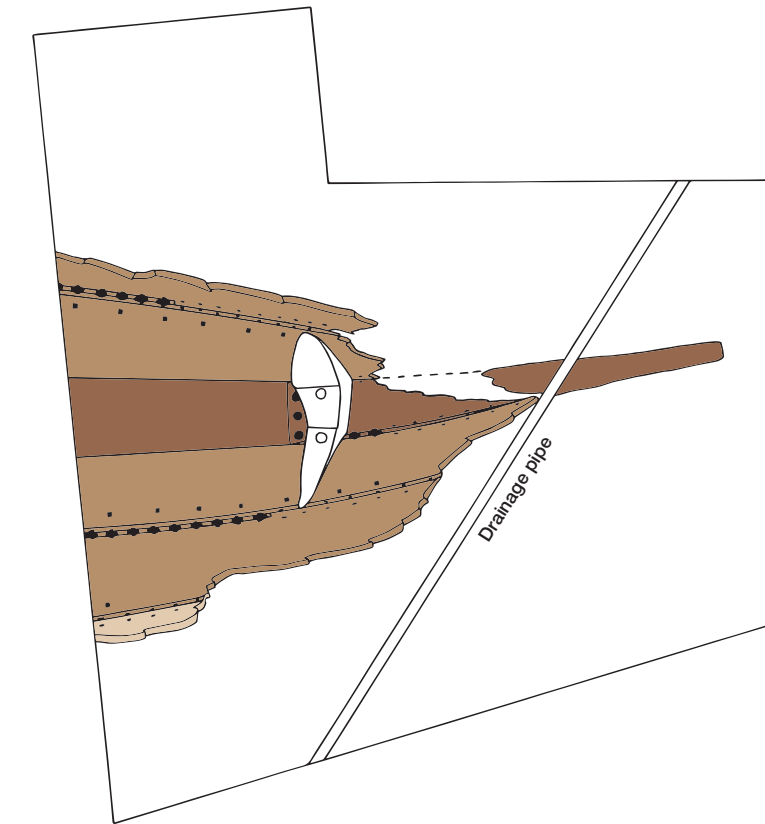
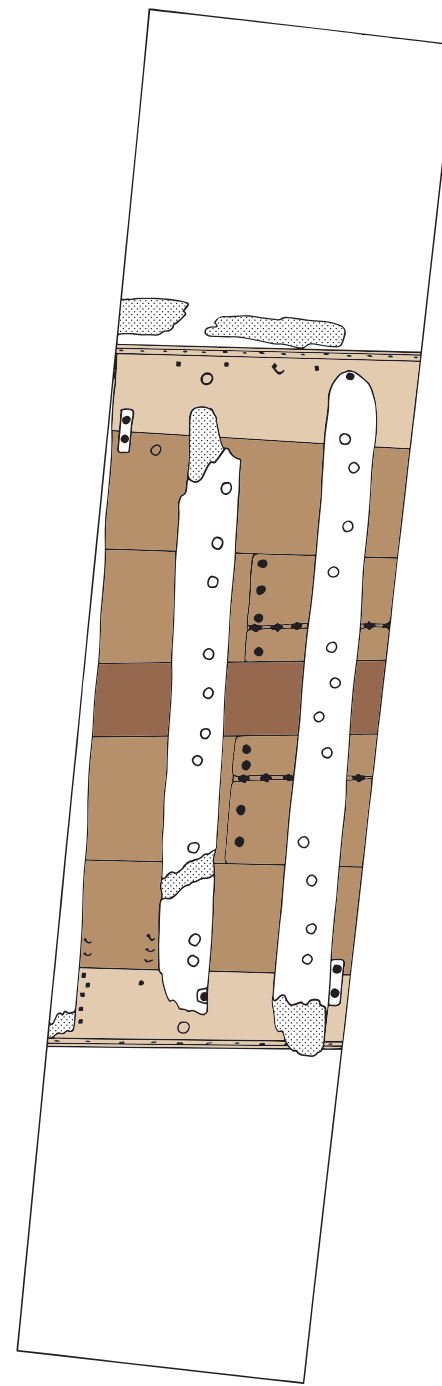
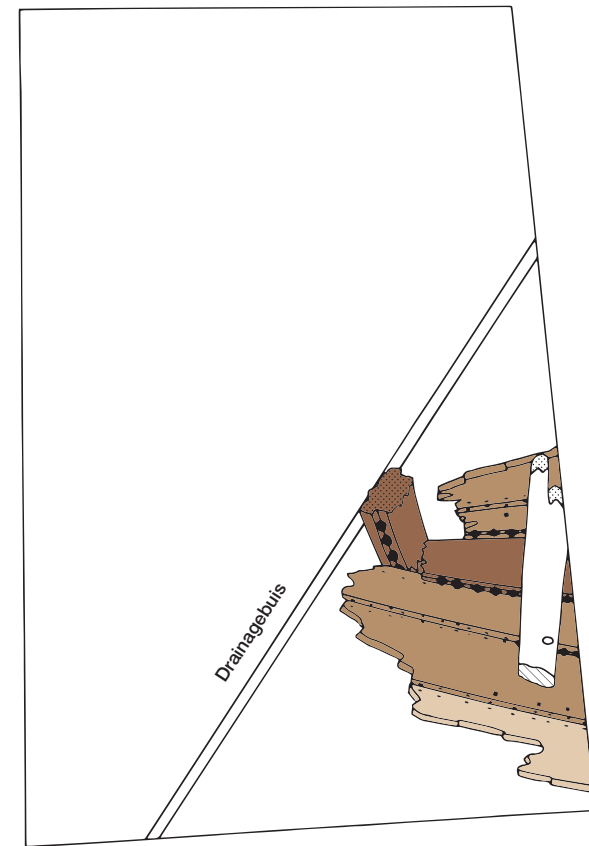


A. Cross-sections



B. The wreck



Legend

- Keel plank, stern- and stem hooks
- Bottom planking
- Planking of the sides
- Frames
- Scarf, cross-cut wood
- Broken-off frame, broken-off hook

Field drawing

- A. Cross-sections of the afterbody, midship and forebody.
- B. The excavation trenches across the afterbody, midship and forebody.

Scale

